



FEDERAL
RESERVE
BANK
of ATLANTA

COVID-19 AND SUPPORTING WORKERS

Stuart Andreason & Sarah Miller

Stuart.Andreason@atl.frb.org

Sarah.Miller@atl.frb.org

March 27, 2020

Launched on October 2017



Mission: Focus on employment policies and labor market issues that affect low- and moderate-income populations

Function: Bridge between research and practice **across the entire Federal Reserve System**. Connect research, business and policymakers with innovative approaches to create economic opportunity through education and employment.

SPEAKING TODAY



Stuart Andreason
Director, CWEO

Stuart.Andreason@atl.frb.org



Sarah Miller
Senior Adviser, CWEO

Sarah.Miller@atl.frb.org

What you'll hear from us:

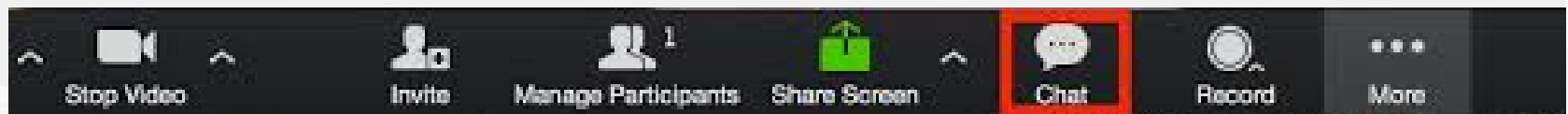
- What's been happening since March?
- Pandemic affect on workers
- Forward facing responses and ideas

What we want to hear from you:

- Significant disruptions
- Policies you've changed (or hope to see changed)
- Resources you anticipate needing
- Ways the Federal Reserve can be helpful to you

- Given the “packed house” crowd we’ll ask you use the chat button to send comments and questions
- With high registration (WOW!!) please use the chat function for questions/comments.

You'll find the button at the bottom of your screen



WHAT WE HAVE SEEN... SO FAR



- Quickly unfolding public health crisis that has unique and different effects on the labor market and workers
- Started with fast growth in stay-at-home work policies and business strategies to stay open
- Quickly growing job loss and disengagement, significant temporary business closures
- Drastic increase in Unemployment Insurance claims (3.3M last week – highest increase in history of Labor since this data has been tracked). Georgia claims went from 5K week of 3/7 to 16K last week
- Mass reduction to in-person job loss support, online systems limited capacity to handle increased traffic
- Influx of challenges managing childcare for remote working families and emergency workforce

LOCAL REALITIES - ATLANTA SPECIFICS

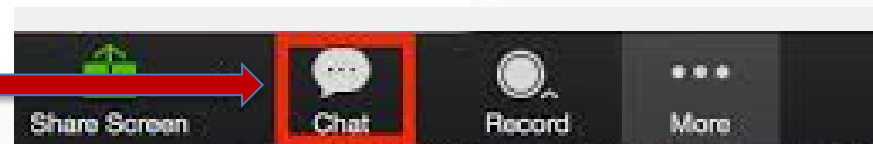


- Non-food service hospitality and entertainment businesses closed, restricted
- Temporary moratorium on residential evictions for 60 days (as of 3/17)
- Emergency fund created to support food programs for children and seniors, homeless preparedness, support to small businesses, assistance to hourly wage earners
- UI changes
 - Waived waiting periods
 - Job search requirements suspended for claims filed 3/14 and on
 - Workers with reduced hours or leaving work temporarily due to illness, to care for a family member, lost child care are now eligible for UI (also included in current stimulus bill in the House).

QUESTIONS WE'RE ASKING

- Short- and Long-term disruptions affects on:
 - Lower Income Workers
 - Workers with Less Formal Education
 - Workers in Different Industries
 - Workers at Small Firms
 - Ability for sectors / small businesses to recover
- Understanding who can adjust their work environment and telecommute
- Particularly focused on policies and practices to keep those who cannot work engaged in the workforce
- What are questions you're trying to answer now or are tracking as this pandemic unfolds?

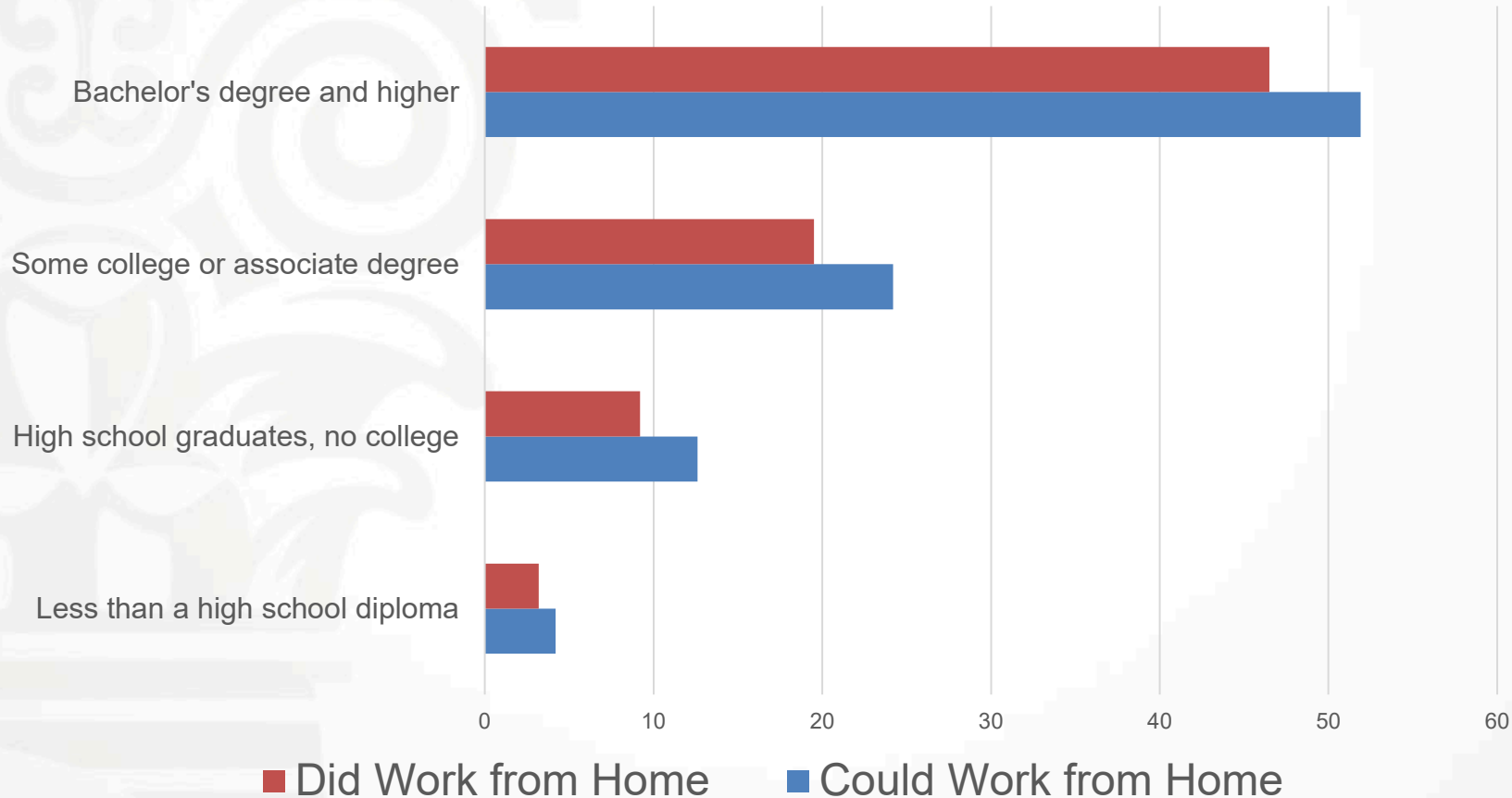
Use the Chat button



DATA DOWNLOAD – WORK FROM HOME

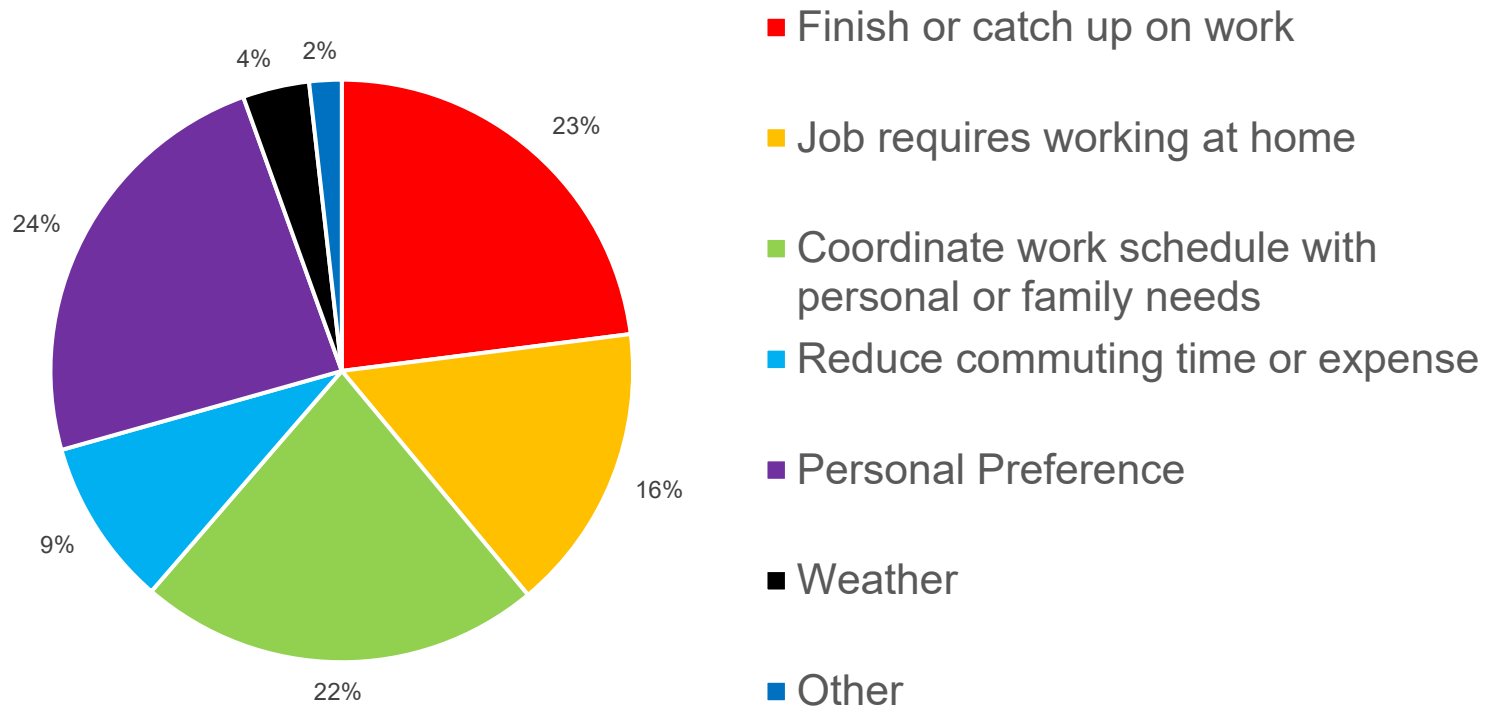
Top Line Takeaway – Less than 30% of ALL workers *could* work from home

Percent of Workers Who Could Work From Home and Who Do Work from Home



Many who work from home may only be able to perform a PORTION of job

Primary Reason for Working From Home



DATA DOWNLOAD – WORK FROM HOME

Your industry/sector affects your ability to work from home too

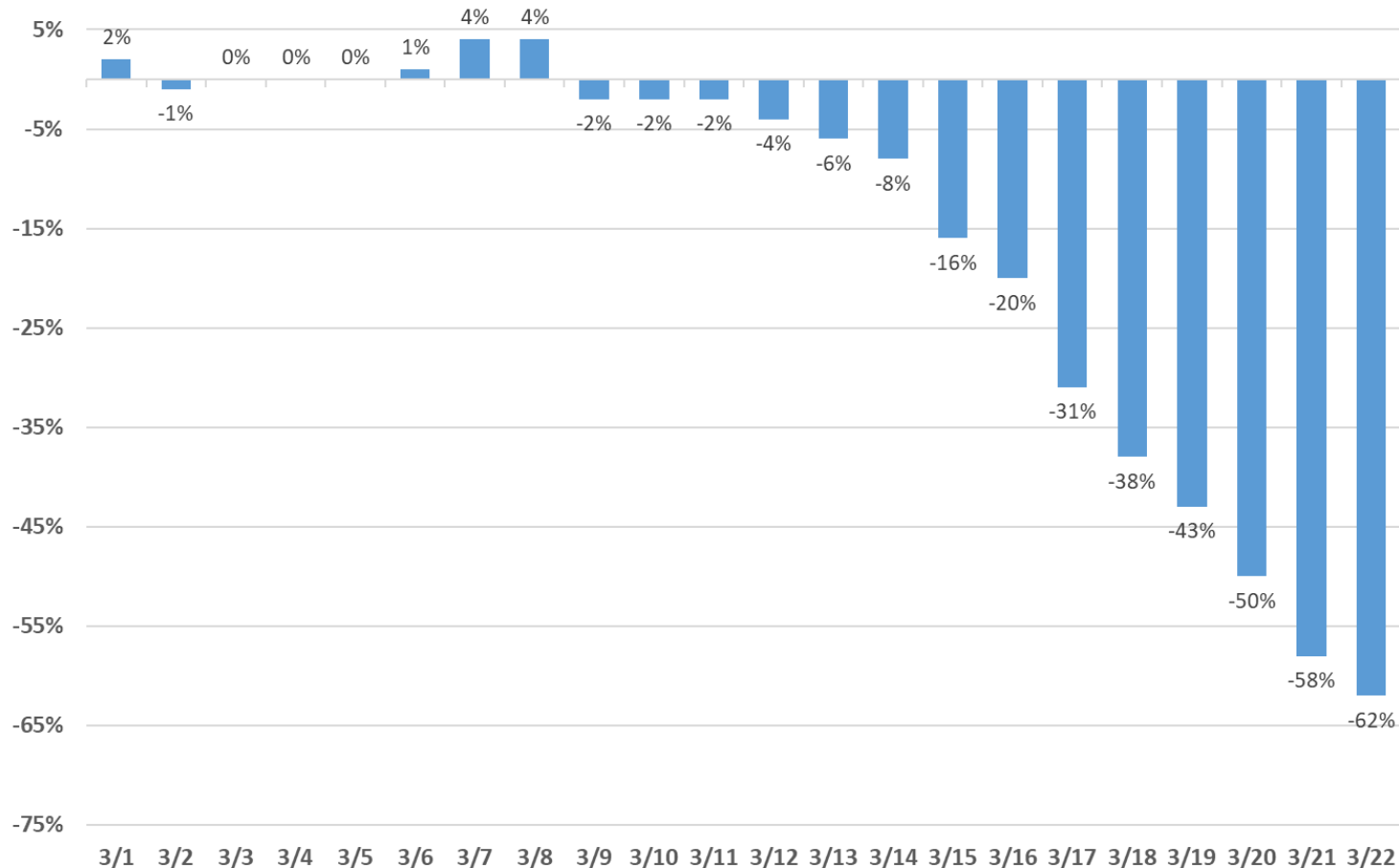
Percent of Workers Who Could Work From Home and Who Do Work from Home by Industry



DATA DOWNLOAD - SMALL BUSINESS

Percentage Change in Total Hours Worked by Small Business Employees in the U.S.

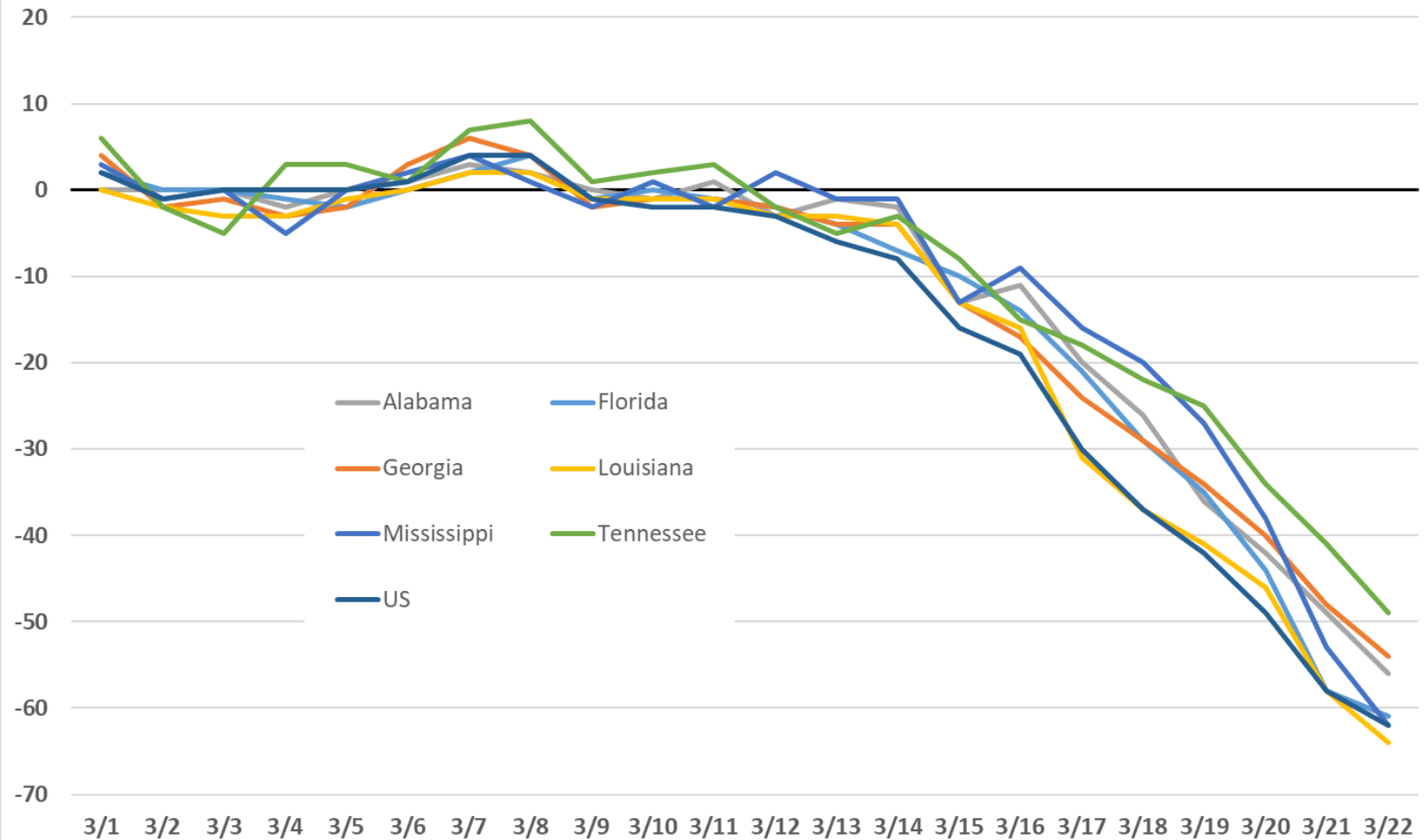
Compared to median hours worked on same weekdays in January



Source: Homebase

DATA DOWNLOAD - SMALL BUSINESS

Percentage Change in Total Hours Worked by Small Business Employees
Compared to median hours worked on same weekdays in January

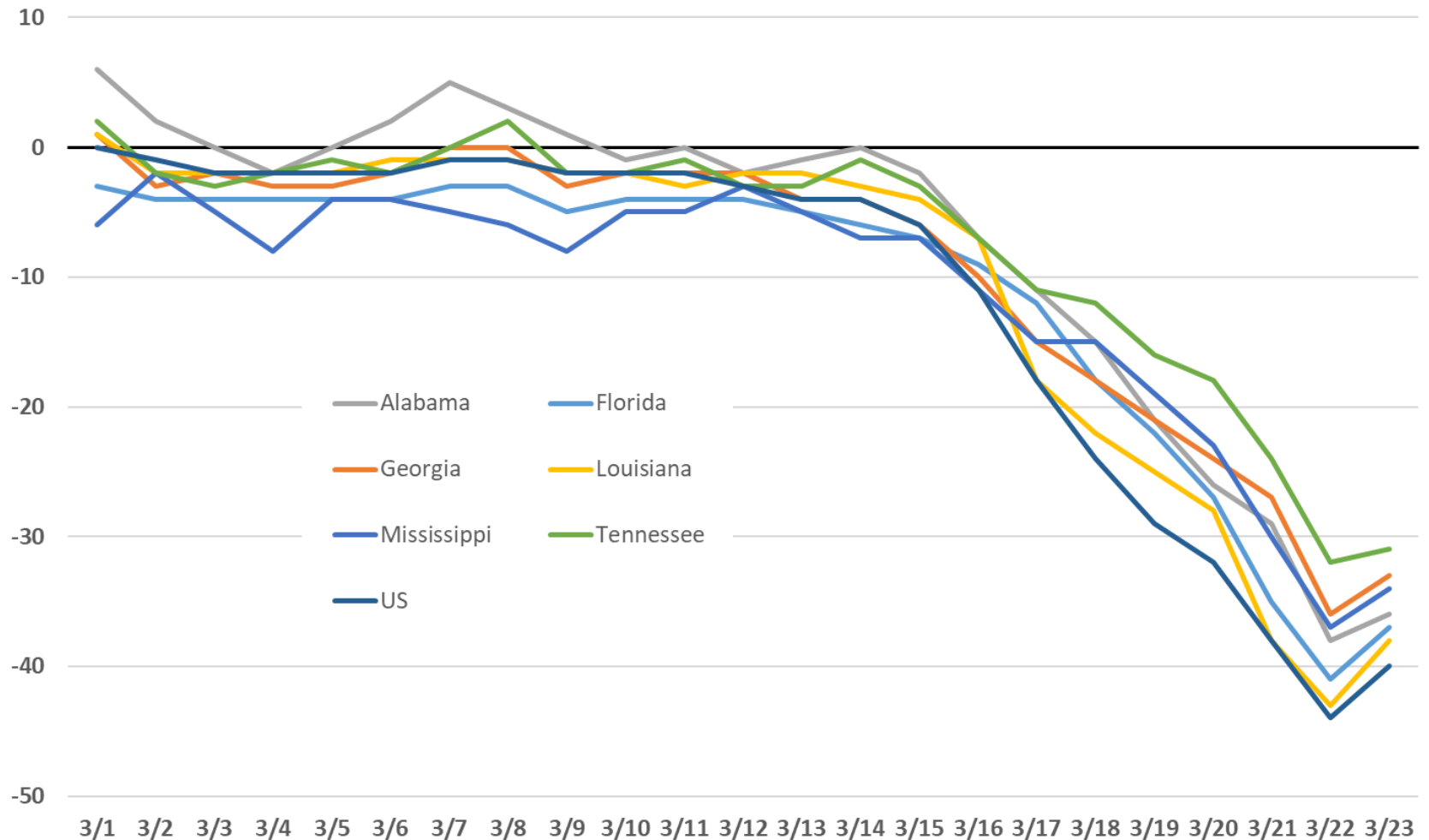


Source: Homebase

DATA DOWNLOAD - SMALL BUSINESS

Percentage Change in Number of Small Business Businesses Open

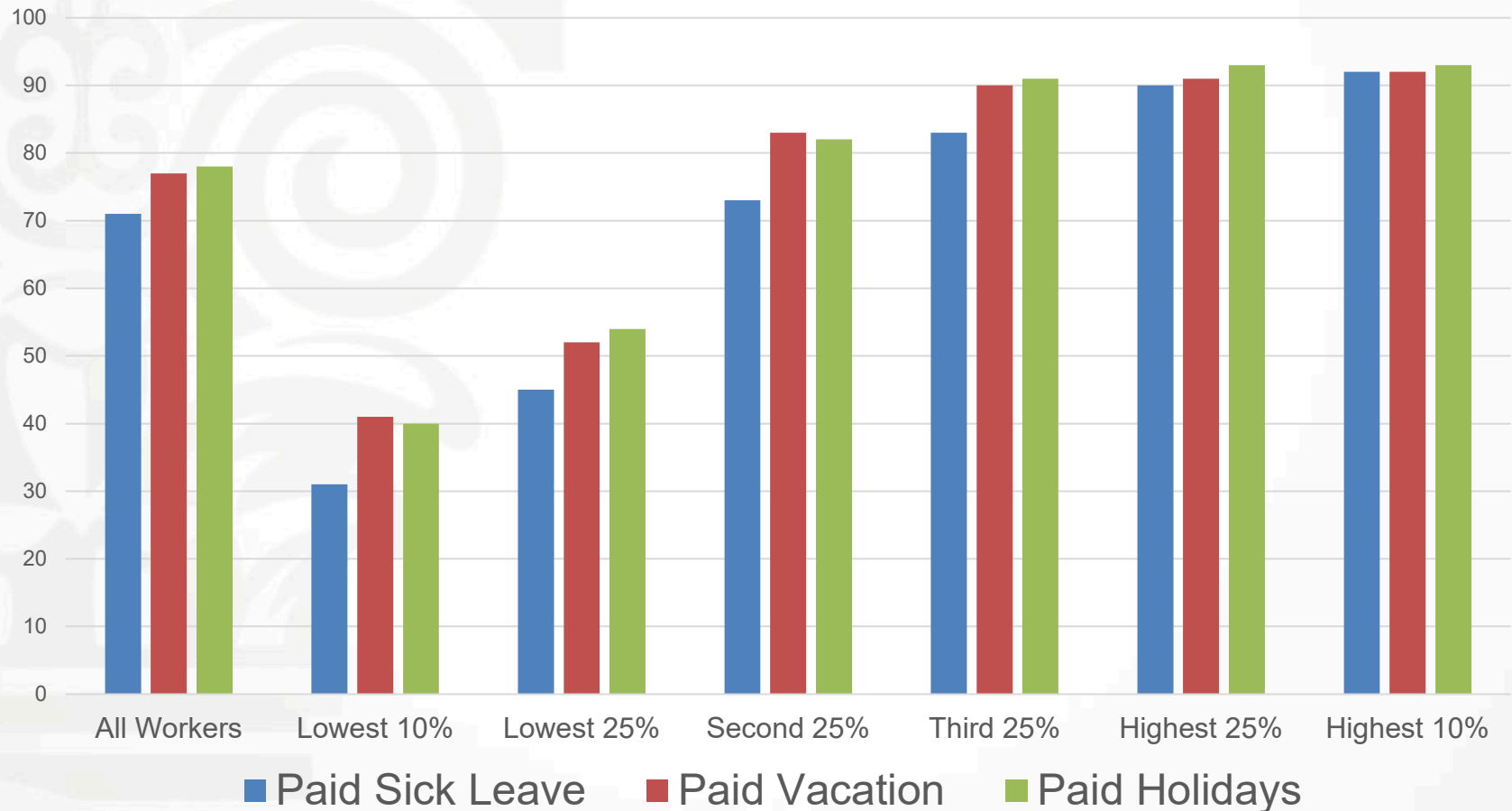
Compared to median number of businesses open on same day in January



DATA DOWNLOAD – PAID LEAVE

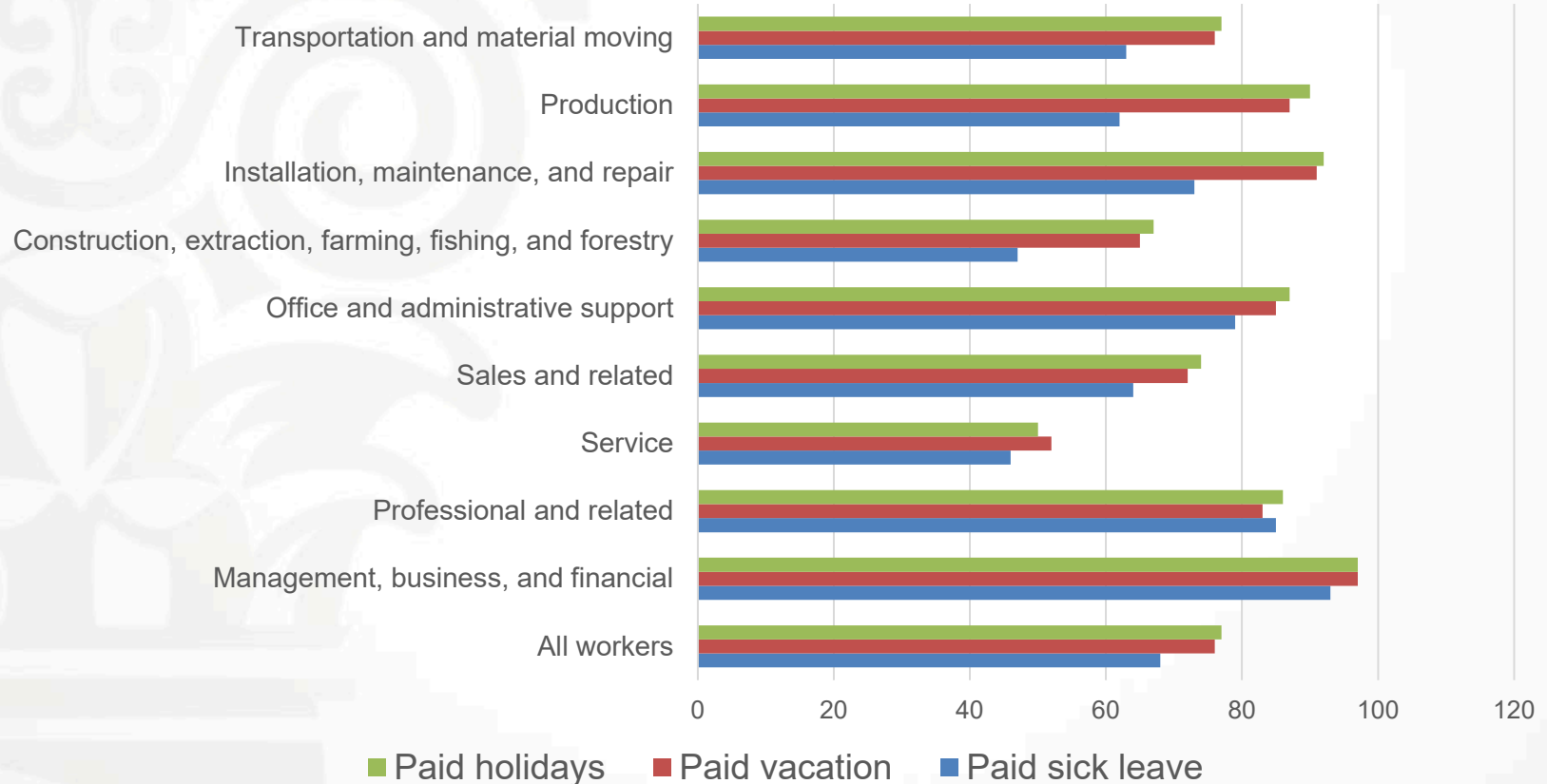
Worker with lower incomes have less
paid leave

Percent of Workers with Leave by Type



COVID affected industries have less leave options available

Percentage of workers in private industry with access to paid leave benefits by occupation March 2017



On the horizon from us—

- Tracking downsize and upsize trends
- Career transitions, common skills, shorter paths from negatively affected occupations to high demand fields
- Childcare support policies

Does this data review ring true?

What else are you tracking?

Other areas we can do research and provide support?

Employer Practices:

- Many have developed new (likely temporary) leave policies supporting isolation for exposure
- Challenge on replication for small firms with limited margins

WIOA:

- Rapid Response funds to address, prevent mass layoffs
- National Dislocated Worker Grants (formerly NEG) used for major national disasters could be used for COVID response and affirms support for 1099

Short-Time Compensation (also known as Work Sharing – small Unemployment Insurance Program)

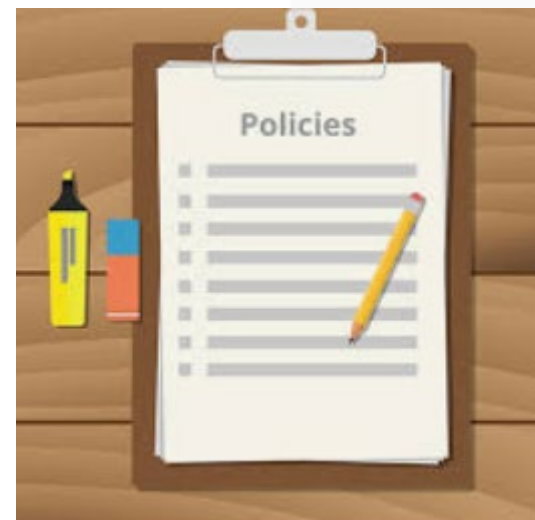
- In 27 states, GA not included
- Families First Act includes assistance to **establish** and expand
- Recent CWEO [Workforce Currents](#) on topic

Program Objective and Function:

- ✓ Layoff aversion strategy for workers with reduced hours
- ✓ 20% drop in demand could result in 20% workforce layoff – instead an organization could cut hours, not reduced staff, and STC offsets lost wages
- ✓ Benefits – workers stay engaged in work (a great benefit and avoids major disruptions in their income and employability)

Tell us what else we should be focused on

- What else is needed to support your participants?
- New system incentives going forward?
- Additional funding allocations?
- How can we be helpful to you?



RESEARCH AND DATA ANALYSIS: OPPORTUNITY OCCUPATIONS MONITOR

States Metro Areas

[Click here to explore](#)

Select metro areas from the list below, or by clicking on the map to display their data:

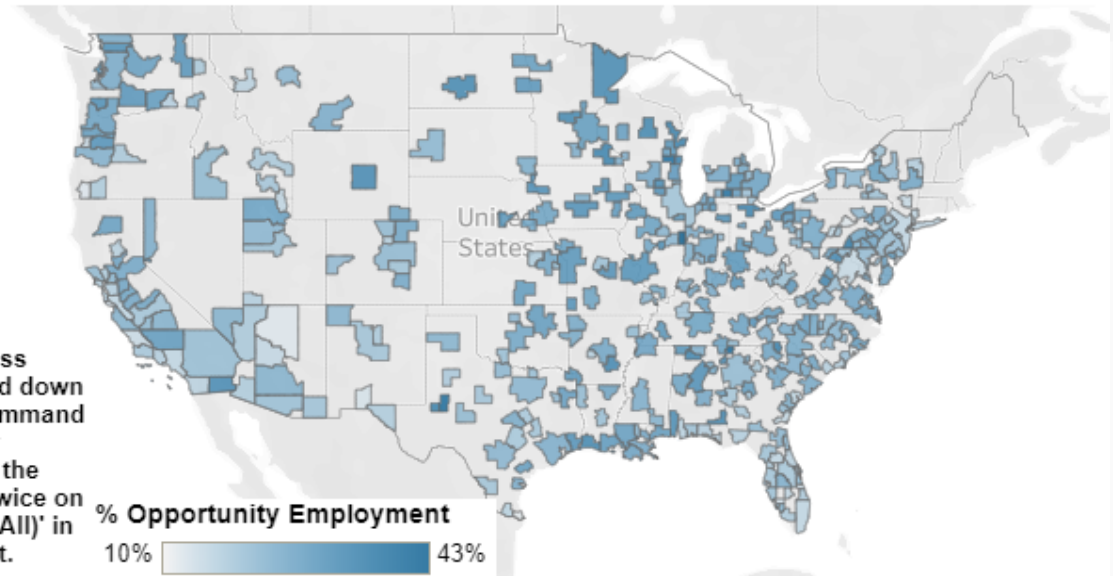
- (All)
- Abilene, TX
- Akron, OH
- Albany-Schenectady-Troy, NY
- Albany, GA
- Albany, OR
- Albuquerque, NM
- Alexandria, LA
- Allentown-Bethlehem-Easton, PA-NJ
- Altoona, PA

Select Year:

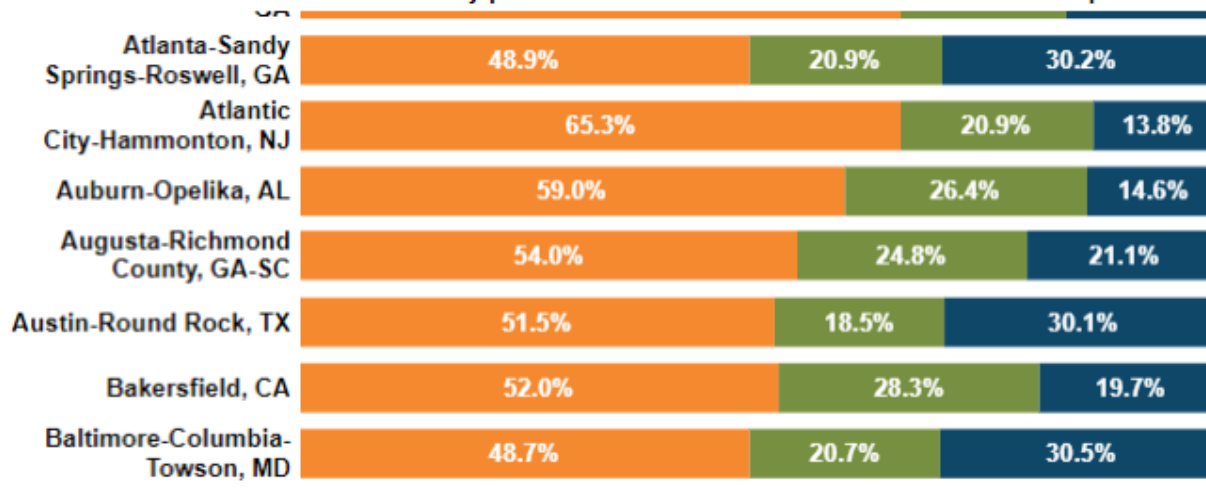
2017



To compare across metro areas: Hold down the control or command key, or drag over several. To reset the selection, click twice on the box next to '(All)' in the list on the left.



Click on any part of a bar below to show the breakdown of occupation data:



- Lower Wage Employment
- Opportunity Employment
- Higher Wage, BA Degree Required

STEM Occupations Filter

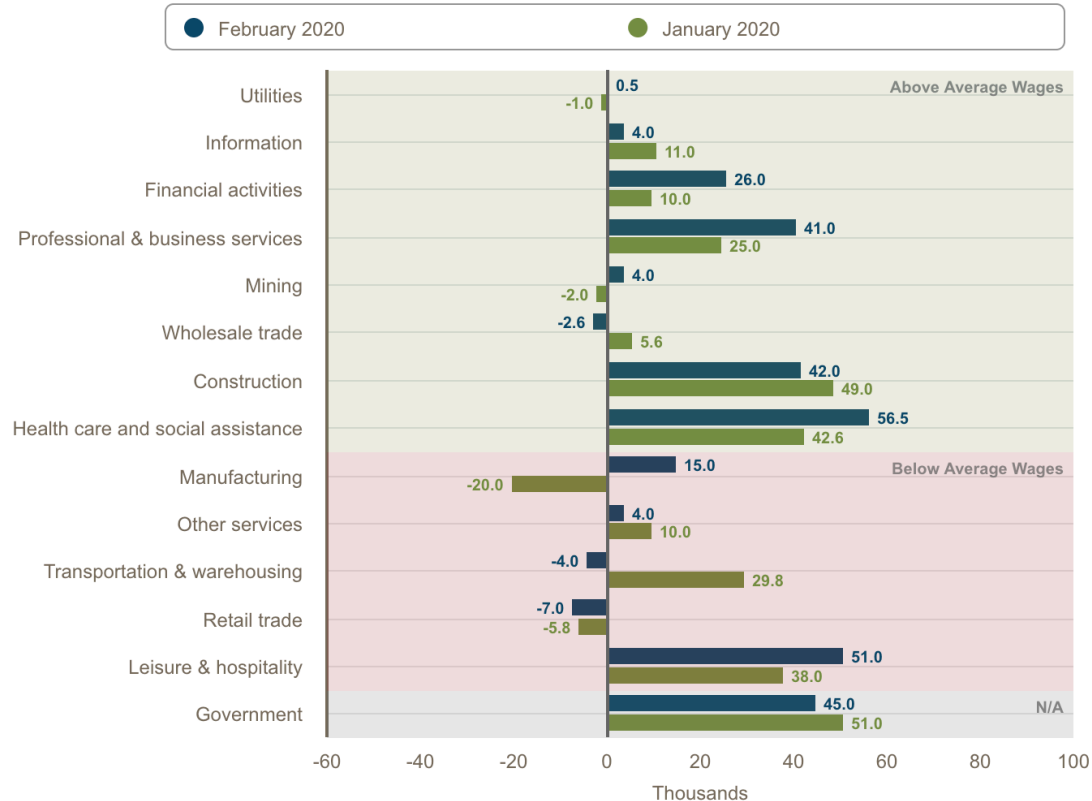
- (All)
- Non-STEM Occupations
- STEM Occupations

Labor Report First Look

Disaggregated,
specific employment
data available
minutes after
monthly job report

One-Month Employment Change Ranked by Industry Hourly Earnings

Export



Note: Private-sector industries are ordered from highest to lowest based on 2018 average hourly earnings seasonally adjusted data. Sources: U.S. Bureau of Labor Statistics Summary Table B and Table B-3, Establishment data; Haver Analytics; Atlanta Fed calculations

Workforce Currents

- Article on remote work and policies available
- Look out for more on –
 - Strategies to re-employ Unemployment Insurance Claimants
 - Regional Analysis of Exposure to COVID and pandemics
 - Continued resources, research, and policy reviews

Partners Update

- Regional and District specific information and analysis
- Look out for research on housing policies, small business supports, and community development strategies for those affected by COVID

Our Staff

We would love to hear what is happening at your organization so that we can elevate your experiences and make connections

www.frbatlanta.org/community-development

www.frbatlanta.org/cweo



FEDERAL
RESERVE
BANK
of ATLANTA

QUESTIONS AND DISCUSSION

WWW.FRBATLANTA.ORG/CWEO

Stuart Andreason & Sarah Miller

Stuart.Andreason@atl.frb.org

Sarah.Miller@atl.frb.org

March 27, 2020